

ATTN TO: Fazi Wahab
 COMPANY: CNC WAHAB
 TEL: +49 172 488 148
 Ref. No: QUO_CNC WAHAB_Rotary Table (HSU PEN)-20210316-a
 DATE: 2021/3/16

VALIDITY: 90 days
 DELIVERY TERMS: FOB Taiwan
 PAYMENT TERMS: 1. 30% down payment of T/T as order confirmation
 2. 70% balance payment of must pay in cash before shipment
 DELIVERY TIME: 30 days after down payment has had confirmed

		Currency: USD			Currency: USD
Rotary Model	Descriptions	Unit Price	Rotary Model	Descriptions	Unit Price
SUA-125	Rotary Table, Pneumatic Brake, 100Nm	2,410	SUH-255N	Rotary Table, Hydraulic Brake, 600Nm	3,810
SUH-125	Rotary Table, Hydraulic Brake, 150Nm	2,500	SUHR-255	Rotary Tailstock, Hydraulic Brake	1,380
SUAR-125	Rotary Tailstock, Pneumatic Brake	800	SUTT-255	Quill Tailstock, Manual Drive	480
SUTT-125	Quill Tailstock, Manual Drive	400	SUTTA/H-255	Quill Tailstock, Pneumatic / Hydraulic Drive	680
SUTTA/H-125	Quill Tailstock, Pneumatic / Hydraulic Drive	580	SK-08+Flange	8" of Manual Chuck with flange	580
SC-05+Flange	5" of Manual Chuck with flange	410	SK-09+Flange	9" of Manual Chuck with flange	680
LB-125	L-block with Flange	390	LB-255	L-block with Flange	510
SUA-170	Rotary Table, Pneumatic Brake, 200Nm	2,820	SUH-320N	Rotary Table, Hydraulic Brake, 1150Nm	4,800
SUH-170	Rotary Table, Hydraulic Brake, 400Nm	2,900	SUHR-320	Rotary Tailstock, Hydraulic Brake	1,710
SUARC-170	Rotary Tailstock, Pneumatic Brake	850	SUTT-320	Quill Tailstock, Manual Drive	540
SUTT-170	Quill Tailstock, Manual Drive	420	SUTTA/H-320	Quill Tailstock, Pneumatic / Hydraulic Drive	700
SUTTA/H-170	Quill Tailstock, Pneumatic / Hydraulic Drive	630	SK-10+Flange	10" of Manual Chuck with flange	1,100
SK-06+Flange	6" of Manual Chuck with flange	460	SK-12+Flange	12" of Manual Chuck with flange	1,300
SK-07+Flange	7" of Manual Chuck with flange	510	LB-320	L-block with Flange	560
LB-170	L-block with Flange	410			
SUA-210	Rotary Table, Pneumatic Brake, 200Nm	2,920	SUH-400N	Rotary Table, Hydraulic Brake, 2000Nm	6,300
SUH-210	Rotary Table, Hydraulic Brake, 400Nm	3,000	SUHR-400	Rotary Tailstock, Hydraulic Brake	2,000
SUARC-210	Rotary Tailstock, Pneumatic Brake	900	SUTT-400	Quill Tailstock, Manual Drive	670
SUTT-210	Quill Tailstock, Manual Drive	470	SUTTA/H-400	Quill Tailstock, Pneumatic / Hydraulic Drive	940
SUTTA/H-210	Quill Tailstock, Pneumatic / Hydraulic Drive	650	SK-10+Flange	10" of Manual Chuck with flange	1,100
SK-07+Flange	7" of Manual Chuck with flange	510	SK-12+Flange	12" of Manual Chuck with flange	1,300
SK-08+Flange	8" of Manual Chuck with flange	580	LB-400	L-block with Flange	680
LB-210	L-block with Flange	460			
Options					
QTS-P	Pneumatic Control Valve for pneumatic quill tailstock	70	QTS-H	Hydraulic Control Valve for hydraulic quill tailstock	100

NOTE: Different currency, such as EURO, GB, RMB, Japanese Yen, are also available for the quotation



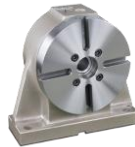
SUA
Pneumatic Type Rotary



SUH
Hydraulic Type Rotary



SK
Manual Chuck



SUH/AR
Hydraulic/Pneumatic
Quill Tailstock



SUTT
Manual Quill
Tailstock



SUTTA
Pneumatic
Quill Tailstock



SUTTH
Hydraulic
Quill Tailstock

2021/3/16

Mr. Jerry Lin

Sales Executive, Tectron Scientific Company